

Announcement on Alternation of Directors, Executive Officers and Organization

Yokohama, Japan, June 27, 2011

Tera Probe, Inc. hereby announces the alternation of Directors, Executive Officers, and Organization with effect from June 27, 2011 as follows.

1. Alternation of Representative Director

Name	After Alternation	Before Alternation
Shigeru Koshimaru	Representative Director Chairman of the Board Executive Officer	Representative Director President and CEO Executive Officer
Yuichiro Watanabe	Representative Director President and CEO, Executive Officer	Director, Executive Officer

2. Alternation of Directors

Name	After Alternation	Before Alternation
Yutaka Takagi	Director (Outside)	—
D. K. Tsai	Resigned	Director (Outside)

Newly appointed director, Mr. Yutaka Takagi is an outside director under the section 15 of the Article 2 of the Companies Act, and has been filed with Tokyo Stock Exchange as an Independent Officer.

3. Alternation of Corporate Auditors

Name	After Alternation	Before Alternation
Toshimasa Ota	Corporate Auditor (full-time)	Corporate Auditor (part-time)
Hiroji Agata	Corporate Auditor (part-time)	Refer to following profile
Masaru Kobayashi	Resigned	Corporate Auditor (full-time)

Newly appointed corporate auditor, Hiroji Agata is an outside auditor under the Section 16, Article 2 of Companies Act and his profile is described as follows.

Birth Date	Profile	Number of Stocks held
Dec. 2, 1946	Sep. 1972 Entered Advantest Corp. Jun. 1993 Director, Advantest Corp. Jun. 1999 Executive Director, Advantest Corp. Jun. 2003 Senior Executive Director, Executive Officer, Advantest Corp. Sep. 2005 Corporate Auditor, Tera Probe, Inc. Jun. 2008 Adviser, Advantest Corp. Jun. 2010 Alternate Auditor, Tera Probe, Inc. Jun. 2011 Corporate Auditor, Tera Probe, Inc., (current)	—

4. Alternation of Executive Officers

Name	After Alternation	Before Alternation
Tsuyoshi Yokoyama	Director and Executive Officer, Memory Business Unit	Director and Memory Business Unit Officer
Shinichi Oi	Executive Officer, System LSI Business Unit	Chief Sales Officer
Takafumi Sebata	Chief Quality Officer	System LSI Business Unit Officer
Kazuhito Kanbe	Chief Financial Officer and Executive Manager, Finance Division	Executive Manager, Finance Division
Hiroataka Shibata	Chief Business Development Officer	Manager, Asian Region Sales Division, Sales Office
Hitoshi Yokoyama	In-charge Executive Officer of Automotive & Turn Key Business	Chief Quality Officer
Yoshimichi Kenmizaki	Appointive Executive to Chairman (WLP Project)	Executive Officer, Corporate Planning Division
Hajime Funatani	Appointive Executive to Chairman (WLP Project)	Chief Financial Officer

5. Organization Changes (with effect from June 27, 2011)

(1) Point of Changes

i) Setting up new “Memory Business Unit” and “System LSI Business Unit”

“Sales Office” function has been respectively merged to “Memory Business Unit” and “System LSI Business Unit”. These new Units are intended to have functions providing consistent service for each customer’s products in order to establish closer business relationship with them. In this regard, “Sales Office” has been dismantled.

ii) Setting up “Business Development Office”

“Business Development Office” has been set up, which is intended to facilitate development in new customers and alliances with third parties in oversea.

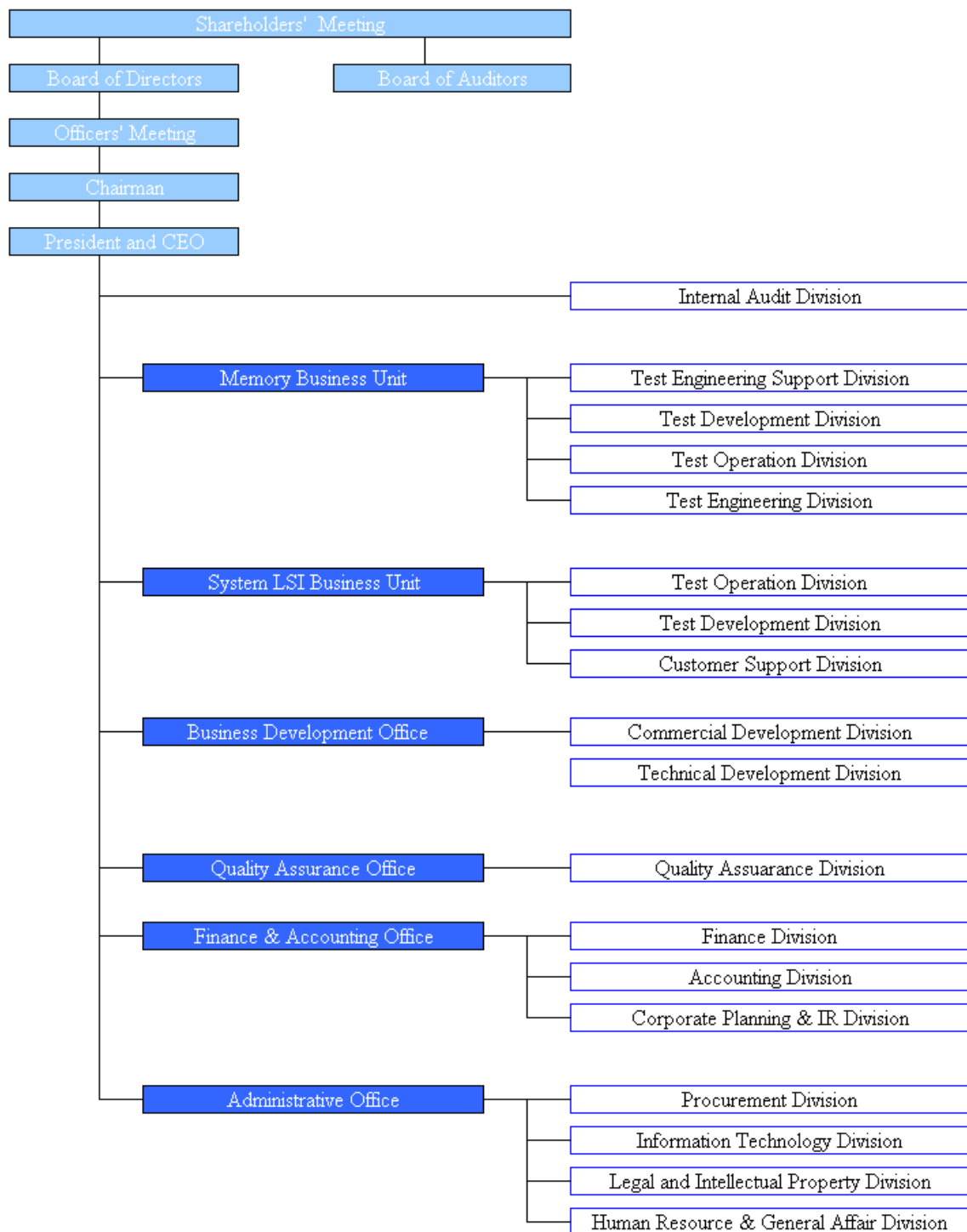
iii) Improvement of “Finance & Accounting Office”

“Corporate Planning & IR Division” has been set up under “Finance & Accounting Office” in order to streamline administrative structure and enhance IR function.

In this regard, former “Corporate Planning Division” has been abolished.

NEWS RELEASE

(2) New Organization Chart



Tera Probe contact:

Corporate Planning & IR Division: Matsumoto / Konishi

Email: ir@teraprobe.com